



**PORTFOLIO**  
**chamara**  
**wijesinghe**



**biophilia**  
recall to nature

**Stay motivated and never stop  
pursuing your dreams!**



With a Bachelor's Degree in Furniture and Interior Design, a postgraduate qualification in Landscape Architecture, and certification in green building consultancy, Chamara brings a wealth of design knowledge to his projects. He has contributed to numerous projects across the country and various parts of South Asia, showcasing his versatility and expertise. In addition to his design work, Chamara has also been involved in creative art projects, photography, and paintings.

As a landscape architect, Chamara closely integrates environmental considerations into every aspect of his designs, ensuring harmony between the built environment and nature. His professional background encompasses roles as a Chartered Landscape Architect, Interior Designer, Senior Lecturer, and Green Building Consultant. He holds a B.Des (Hons) from the Faculty of Architecture at the University of Moratuwa, a PG Dip in Landscape Architecture from the same institution, and an EMBA from the University of Jayawardenapura, Sri Lanka.

A focus on research and a detail-oriented approach to landscape architecture sets him apart: He thoroughly researches the environment of the project and brings in creative solutions that allow for innovative but practical and environment-friendly approaches that are sustainable

*Chamara Wijesinghe*

**Chamara Wijesinghe  
2024**

**Personal Profile:** I am a passionate and creative Landscape Architect with a strong commitment to environmental sustainability and the creation of functional and visually appealing outdoor spaces. With a deep appreciation for nature and design, I possess a keen eye for detail and an ability to transform landscapes into unique and harmonious environments. My strong technical skills, coupled with my ability to collaborate effectively with clients and stakeholders, allow me to bring innovative and practical solutions to every project.

**Career Objective:** My career objective is to leverage my expertise and experience as a Landscape Architect to contribute to the development of sustainable and impactful landscapes. I aim to create designs that not only enhance the aesthetic value of a space but also promote ecological balance, social well-being, and environmental sustainability. By combining my passion for design, horticulture, and environmental stewardship, I aspire to play a key role in shaping our built environment in a way that positively impacts communities and improves quality of life. I am seeking opportunities to work on diverse projects where I can utilize my skills in landscape design, project management, and environmental planning to create meaningful and enduring landscapes.



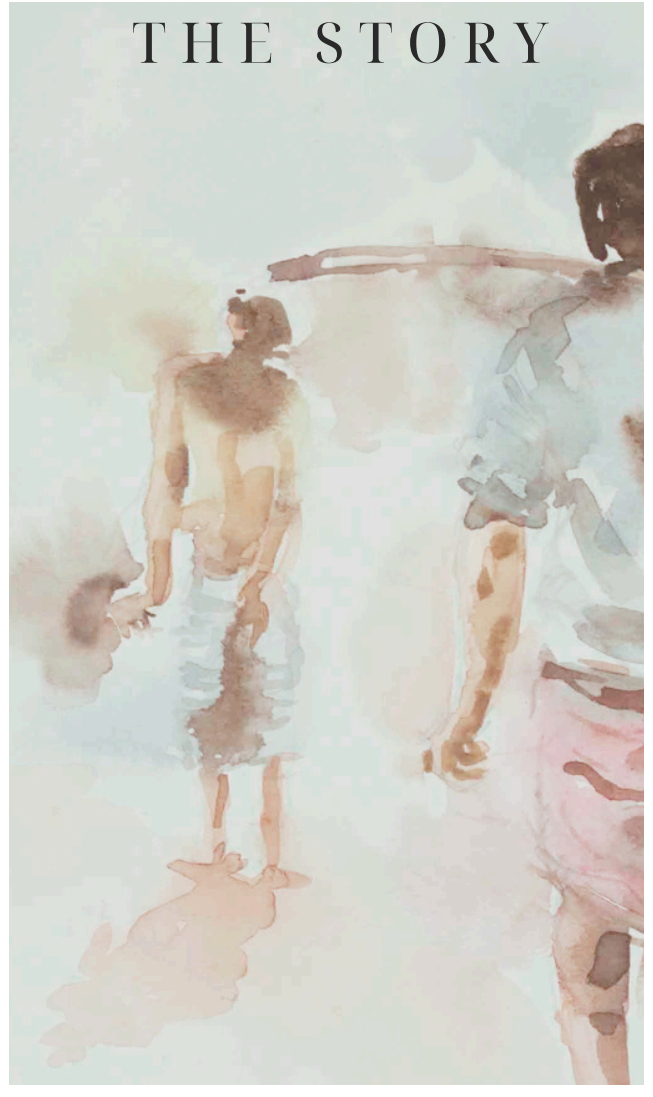
Since childhood, Mr. Chamara has been steeped in an artistic environment, nurturing his innate artistic talents that were evident from the start. Growing up amidst artistry, he honed his skills and developed a deep appreciation for colors and painting. His surroundings, rich with creative influence, propelled him into the world of art, where he found solace and inspiration. From his earliest years, the vibrant hues of nature and his imagination, guiding him on a path where his love for art and colors blossomed into a lifelong passion.

Mr. Chamara's artistic journey expanded beyond conventional boundaries, delving into color experiments, installation art, Sculpture designs and acrylic paintings, where he explored out-of-the-box concepts that challenged traditional norms. Engaging with art groups, he cultivated collaborations that enriched his artistic exposure and expanded his creative horizons. Through his innovative designs, he pushed the limits of expression and emotion to evoke profound experiences in viewers. His diverse repertoire reflects a relentless pursuit of artistic exploration and a commitment to pushing the boundaries of creativity.

He founded Trees.lk with the intention of building a knowledge base centered around plant data, utilizing tree illustrations, photographs, and comprehensive information. Over time, the platform evolved into an online database through the accumulation of extensive data. To enhance its offerings, collaborating with a dedicated team including university students and plant experts to ensure accuracy and relevance. Following this phase of growth, the decision was made to rebrand Trees.lk as Biophilia, reflecting a broader vision focused on humanity's intrinsic connection to nature. Under the Biophilia brand, the platform expanded its services and capabilities, catering to a wider audience.

In Biophilia, he applies conceptual theories and philosophies that are deeply rooted in connecting with nature, all in line with the slogan "Growing with Nature is the Best Solution." Embracing this ethos, Biophilia draws inspiration from the rhythms in nature to inform their design concepts. With a focus on sustainable practices and environmental consciousness, they continually expand their capabilities to offer services that resonate globally. Biophilia not only delivers innovative designs but also advocates for a deeper connection to nature in all aspects of life.

# THE STORY



## STEEL DESIGN, WHERE INNOVATION MEETS RESILIENCE.



# MY TEAM

Biophilia , the union of brilliant design with the splendor of nature. Being a leading landscape architectural company, we are experts at creating outdoor environments that combine sustainability, use, and beauty. We urge you to explore our profile and learn how we bring landscapes to life. We are passionate about creating places that enhance lives and harmony with their surroundings.

We have a qualified team with landscape architects, architects, engineers, quantity surveyors, plumbing engineers, artists, botanists, accountants and project managers who can excel in any type of work and master projects. Our team specialize in and outdoor landscaping in houses with gardens and apartments, office premises, factories, industrial parks, public spaces, etc. We also provide holistic services for the constant maintenance and management of these places for upkeep.

## Services provided



CONSULTATION



LANDSCAPING



TREE DOCTOR



CONSTRUCTION AND  
MAINTENANCE



GREEN INTERIOR



GREEN PRODUCTS

# PLANT E - BOOK

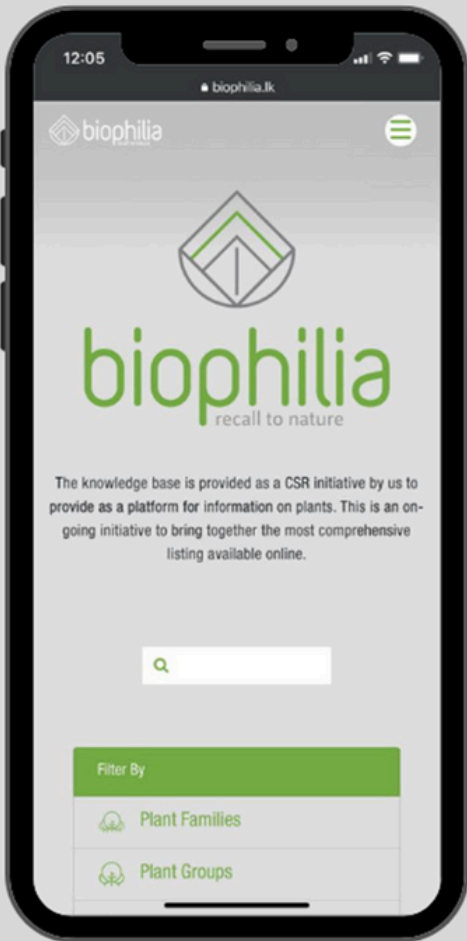
Search & Learn about plants

## CSR INITIATIVE ON SRI LANKA'S FIRST EVER PLANT DATABASE

Biophilia knowledge base is an online free-to-use information database and associated website for those interested in useful plants.

The objectives of the charity are 'to advance the education of the public by the promotion of all aspects of ecologically sustainable horticulture and agriculture with an emphasis on tree, shrub and other perennial species; and the undertaking of research into such horticulture and agriculture, and dissemination of the results of such research.

Website - [www.biophilia.lk](http://www.biophilia.lk)





# WHAT HAS BEEN DONE?

**Hotel &  
Restaurants**

**Apartment &  
Residential  
Projects**

**Office &  
Industry  
Landscape**

**Public  
Spaces**



# ANANTARA

*Kaluthara,  
Tri Lanka*



The site is located down south between the coast and the lagoon. In this unique landscape it was very important to create a design with the sea breeze and wind. But we used giant pots as well as sculptures to enhance the garden and not just the mild landscape. The place already has a community road and a hotel, we use the soft landscape to divide both sides, giving the community a pleasant view.





# WATER GARDEN

*Sigiriya,  
Pri Lanka*



This site is located in the northern part of Sigiriya. We are trying to improve the dryland landscape and modern version of Sigiriya Archaeological Park. We float with water assuming sustainability and ecosystem. Various soft landscaping solutions were used to enhance the natural beauty of the site. In this design, we tried to give visitors an experience of agriculture and culture.

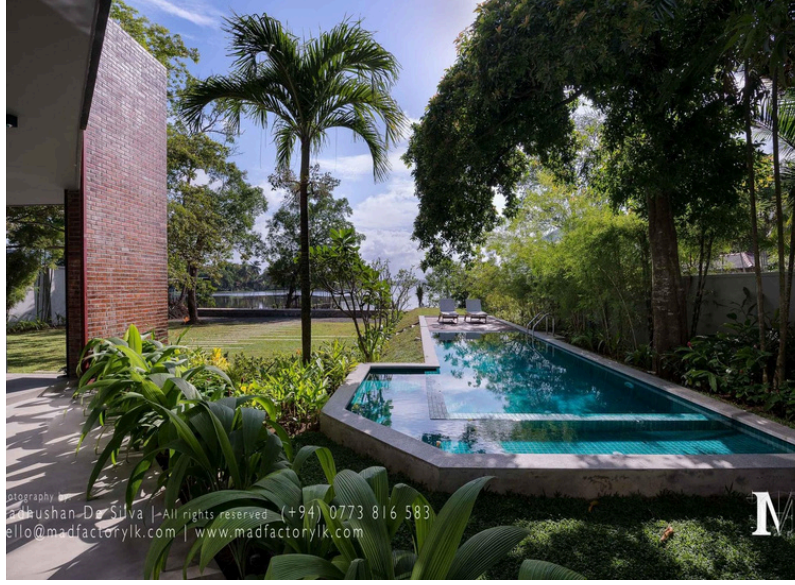


photography by:  
 Madhushan De Silva | All rights reserved (+94) 0773 816 583  
 hello@madfactorylk.com | www.madfactorylk.com



# CARLSEN HOTEL LANDSCAPE

*Moratuwa, Sri Lanka*



photography by:  
 Madhushan De Silva | All rights reserved (+94) 0773 816 583  
 hello@madfactorylk.com | www.madfactorylk.com



This project is a design of a landscape which often floods throughout the year. It contains a villa. We have designed the land to bear the water fluctuations due to flooding by using water friendly plants. The design was created by using patterns that could merge the water body and the building.



# Hotel and Restaurants

---



Hotel Landscape Renovation

**THE BLUE WATER AT WADDUWA,  
SRI LANKA**

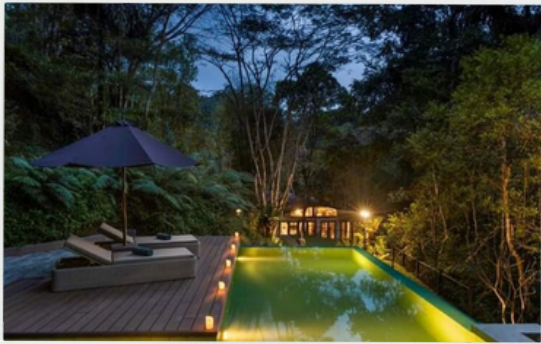
Client - Mr. Ajith Wijesekara



Hotel Landscape

**MOVENPICK AT KOLLUPITIYA,  
SRI LANKA**

Client - Mr. Ashok Pathirage



Hotel Landscape

**THE WEIR HOUSE AT ULAPANE,  
SRI LANKA**

Client - Mr. Murtaza Yusuf Ali



Hotel Landscape

**CINNOMON LIFE AT COLOMBO,  
SRI LANKA**

Client - John Keels Holdings



Hotel Landscape

**PELICON HOUSE HOTEL AT GALLE,  
SRI LANKA**

Client - Mr. Priyanga Hettiarachchi



Hotel Landscape

**HOTEL LANDSCAPE AT BELLANWILA ,  
SRI LANKA**

Client -Mr.Udara Seneviratne



# TRI-ZEN APARTMENT

*Colombo, Sri Lanka*



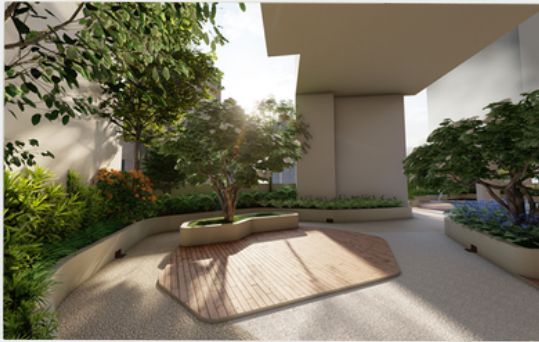
Being the official landscape consultant and construction specialist, we designed this high rise building by giving special attention to reducing carbon footprint and addressing some of the salient issues of skyscrapers. In order to mitigate these issues, we have used indigenous trees and plants for the roof garden.

<https://www.youtube.com/watch?v=27b0cYzaMkw>



# Apartment and Residential Projects

---



Apartment Landscape

**TRI ZEN APARTMENT AT COLOMBO,  
SRI LANKA**

Client - John KEELLS Properties



Apartment Landscape

**APARTMENT LANDSCAPE AT  
RAJAGIRIYA , SRI LANKA**

Client - Iconic Galaxy



Apartment Landscape

**ROOF GARDEN AT KELANIYA,  
SRI LANKA**

Client - CK Homes



Private Landscape

**RESIDENTIAL LANDSCAPE AT  
MATARA, SRI LANKA**

Client - Dr. Samith Balapitiyehewa



Private Landscape

**LANDSCAPE DESIGN PROJECT AT  
COLOMBO , SRI LANKA**

Client - Mr. Ranil Fernando



Private Landscape

**RESIDENTIAL LANDSCAPE PROJECT  
AT BATTARAMULLA , SRI LANKA**

Client - Dr. H.T. Wickremasinghe

# Office and Industry Landscape

---



Office Landscape

**SAS ARCHITECTS AT NUGEGODA,  
SRI LANKA**

Client - SAS Architects



Office Landscape

**WORLD TRADE CENTER AT  
COLOMBO, SRI LANKA**

Client - Overseas Reality



Office Landscape

**JAMES FINLAY OFFICE LANDSCAPE  
AT WELISARA , SRILANKA**

Client - James Finlay



Office Landscape

**SRIYANI DRESS POINT AT  
GALAGEDARA, SRI LANKA**

Client - Sriyani Dress Point



Office Landscape

**KAIROS WEDDINGS OFFICE AT  
BALAPOKUNA, SRI LANKA**

Client - Kairos Wedding Planning



Office Landscape

**FOOTBALL HOUSE LANDSCAPING  
PROJECT AT COLOMBO, SRI LANKA**

Client - Football Federation



# LOTUS THEATRE

*Colombo, Sri Lanka*

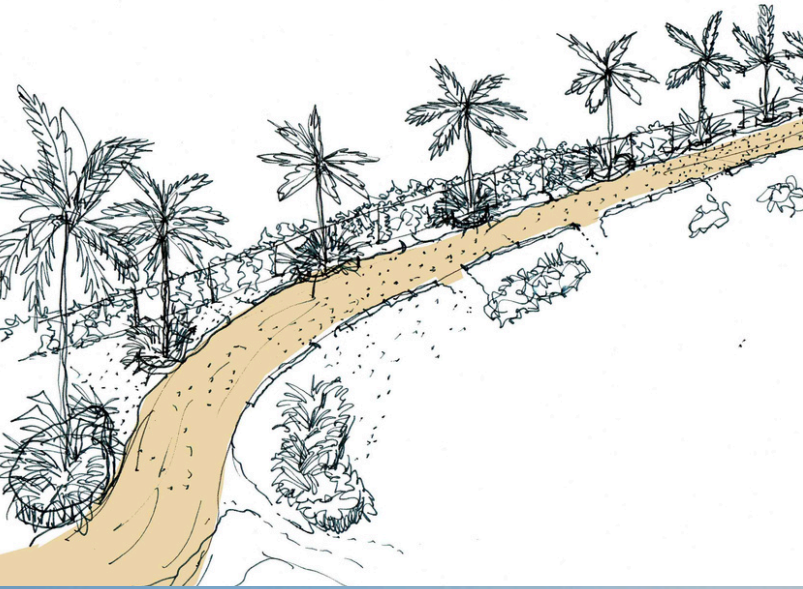


We did internal and external development work here, this is a Colombo National Theatre. In this public space we have made suitable solutions for the site detailed interior.



# SEGUWANTIVU AND VIDATAMUNAI WIND FARMS

*Puttalam Lagoon, in Puttalam, Sri Lanka.*



Nestled within a rugged expanse of arid terrain lies our industrial project, a testament to ingenuity and adaptation in the face of challenge. Here, in this windswept landscape, we embrace the elements as collaborators rather than adversaries, guided by the imperative to harmonize with nature. With the primary requirement of preserving the unimpeded flow of wind, our design eschews traditional barriers, opting instead to seamlessly integrate with the existing environment.

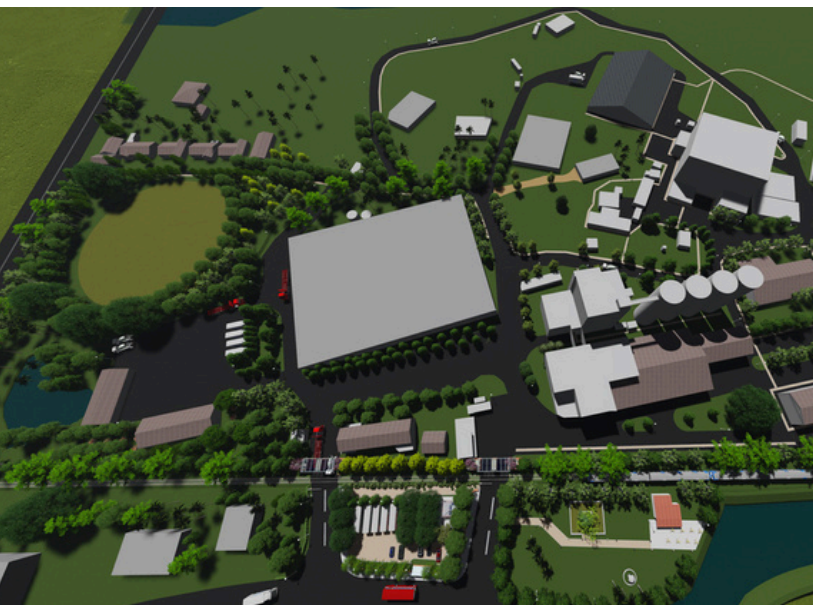






# SIAM CITY

*Galle,  
Pri Lanka*



This landscape is located in an environmentally sensitive area. Coastal mangroves, and the waterbody are some of the special existing landscape features. This area is well known as a tourist hub. This design aims to reduce air and noise pollution owing to the industrial activities that take place on a large scale. In order to mitigate such impacts, the project was conducted through extensive research on plants unique to the area. The consultation was done in 2017.



# NAGANANDA BUDDHIST UNIVERSITY

*Kelaniya, Sri Lanka*



The arrangement of water features, the evening light from the red western sky, wind patterns over the site and the topographic identities of the land with the built fabric are considered as the fundamental substructure elements for the landscape design. The color and smell of the selected indigenous trees may change from season to season and emphasize different harmonic combinations of fundamental elements.

# Public Spaces

---



Culture center Landscape

**GERMAN CULTURAL CENTER AT  
COLOMBO 7, SRI LANKA**

Client - German Cultural Center



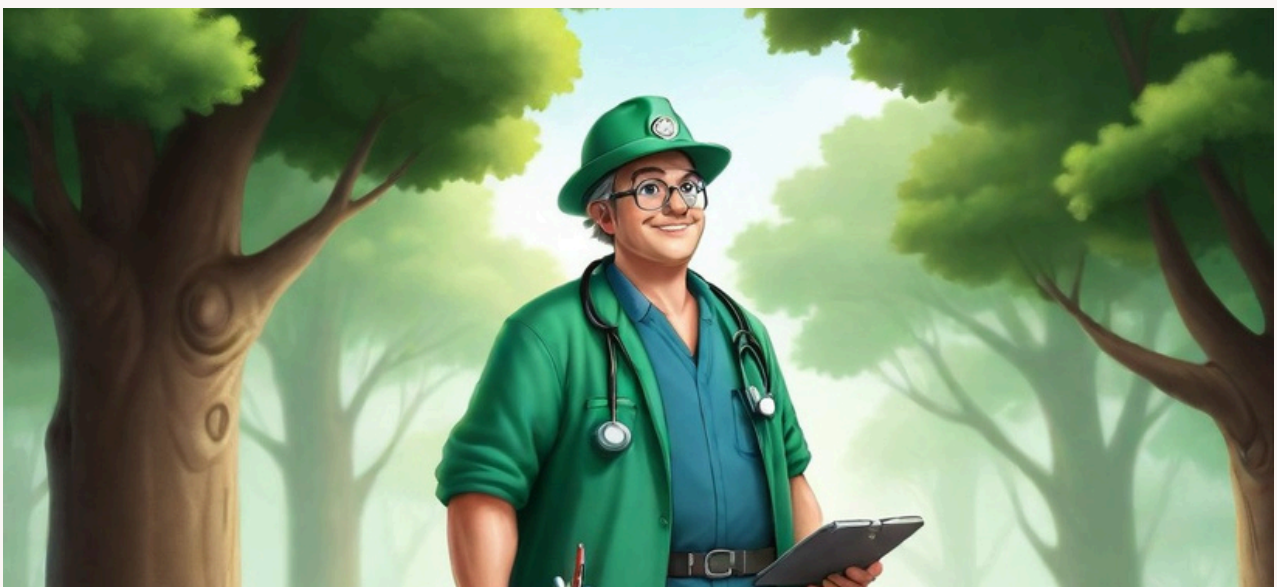
School Landscape

**GATEWAY COLLEGE AT KANDY,  
SRI LANKA**

Client - Dr. Harsha Alas

## Tree Doctor

The health and well-being of plants and trees within any garden are paramount for harnessing the true potential of the space. At our core, we excel in meticulously evaluating the overall condition of landscapes, adeptly identifying any health concerns that may arise. Through rigorous visual inspections, we discern potential issues and implement targeted strategies to rectify them effectively. From diagnosing diseases to mitigating environmental stressors, our approach is proactive, ensuring that trees and shrubs receive the necessary care to thrive and flourish.



# IMPACT OF COLORS



Especially integration into the landscape based on colour both psychological and physiological aspects in urban contexts. The method uses colour scheme recording in urban landscapes and photographic analysis of the pertinent attributes.



“Explorative study on benefits of vertical landscape to achieve skyrise interior spatial quality in terms of thermal, acoustic, visual comfort and air quality in urban areas”

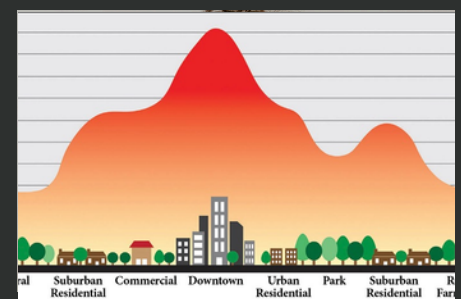
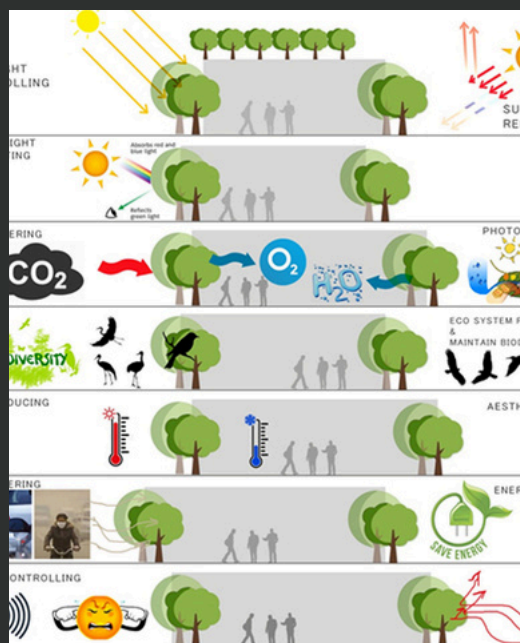
In studying about landscape architecture’s colour usage, both colour physiology and colour psychology have to be understood.

<https://biophilia.lk/research/impact-of-colors-in-landscape-architecture>

# IMPACT OF VERTICAL LANDSCAPE

“Explorative study on benefits of vertical landscape to achieve skyrise interior spatial quality in terms of thermal, acoustic, visual comfort and air quality in urban areas”

Cities are therefore centers of consumption (energy, materials ...), greenhouse gas production, waste and emissions of pollutants in water and air.



<https://biophilia.lk/research/impact-of-vertical-landscape-in-urban-spaces>

# INTERNATIONAL LEVEL PARTICIPATION

---

## ART LINK” INTERNATIONAL VIDEO ARTISTS’ WORKSHOP 2008

Art Link” International video Artists’ Workshop 2008 organized by the British Council, German cultural Center and Alliance Française de Colombo. The video featured innovative experiments and based on installation art



## GERMAN DESIGN FURNITURE EXHIBITION-2010

German Design Exhibition-2010” German furniture designer’s exhibition organized by the Goethe Institute at the GDA Perera Gallery, Colombo and participated in the outdoor bench design.



## INTERNATIONAL FEDERATION OF LANDSCAPE ARCHITECTS (IFLA) ASIA PASIFIC -2017

Participated International Federation of Landscape Architects (IFLA) Asia-Pacific Regional Congress 2017, hosted at the Bangkok Marriott Marquis Queen’s Park at Bangkok, Thailand.



## IFLA WORLD CONGRESS @ SINGAPORE 2018

International Federation of Landscape Architects (IFLA) World Congress 2018, Singapore: Participated in the council representing the Sri Lanka Institute of Landscape Architects. In 2018, Chamara was selected for a poster paper presentation on 'Exploratory Study on the Benefits of Vertical Landscaping to Achieve Skyrise Interior Spatial Quality in Terms of Thermal, Acoustic, Visual Comfort, and Air Quality in Urban Areas'.



## BUSINESS NETWORK INTERNATIONAL 2019

Participated in Business Network International as an entrepreneur, connecting with global business audiences across the world.

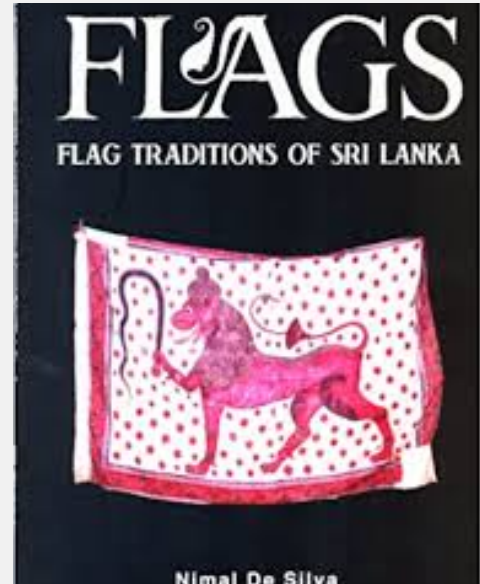


# INVOLVED PUBLICATIONS

---

## FLAGS- FLAG TRADITIONS OF SRI LANKA

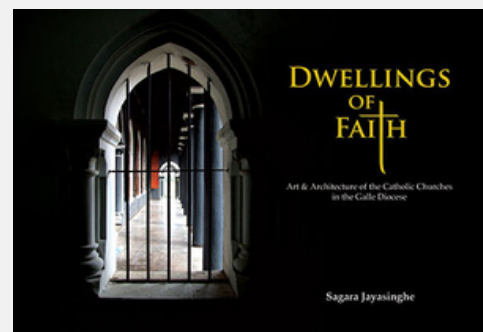
Chamara worked as a research coordinator and editor of "Flag Traditions of Sri Lanka" by Professor Nimal De Silva. During this time, he collected all the flag types under different categories, amassing more than 600 flags. This book illustrates the value of flags in art, anthropology, history, and flag tradition. this book published in 2013



---

## DWELLINGS OF FAITH

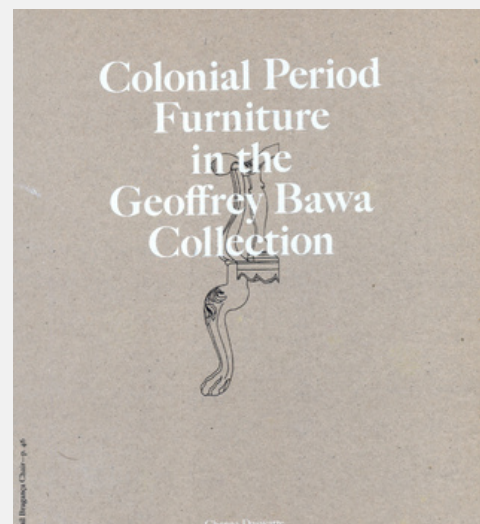
Chamara contributed to Architect Sagara Jayasinghe's project on church architecture in southern Sri Lanka, capturing its deep connection to the community of faith through architectural photography and measured drawings. The resulting book serves as a record of the rich art and architectural heritage of Catholic churches in Southern Sri Lanka.



---

## COLONIAL PERIOD FURNITURE IN THE GEOFFREY BAWA COLLECTION

Chamara has meticulously documented measurements and recorded details about the late architect Geoffrey Bawa's furniture collection at Bawa's buildings. Architect Channa Daswattha published this book in during Bawa's Colonial Furniture Collection exhibition at the Barefoot Gallery in Colombo, Sri Lanka. This book published in 2012





**AT ANNUAL GREEN BUILDING AWARD CEREMONY**

Award Ceremony | 2015



**AT ART NEED SPACE**

During the workshop with German Nomad Umar Artist | 2012



**AT IFLA CONFERENCE, SINGAPORE**

During the IFLA World Council meeting with Professor Kathryn Moore, President of the International Federation of Landscape Architects | 2018



**AT COLOMBO BIENNALE**

During Art Exhibition | 2012



**AT SRI LANKA INSTITUTE OF INTERIOR DESIGNERS**

During the educational Session | 2018



**AT ART WALK**

During the Exhibition | 2007



**AT ICONIC GALAXY APARTMENT**

During the Construction period | 2023



**AT IFLA ACIA PACIFIC, BANGKOK**

During the Ceremony | 2017



**AT NATIONAL YOUTH AWARD CEREMONY**

Award Ceremony | 2010

COOPERATE BRANDS



**THE BLUE WATER**  
HOTEL AND SPA  
THE BLUE WATER HOTEL



**WATER GARDEN**  
SIGIRIYA HOTEL



**THE GRAND MOUNTAIN**  
HOTEL



**W15 APARTMENT**



**MOVENPICK HOTEL**



**CINNAMON LIFE**  
APARTMENT



**MARINO MALL**



**JOHN KEELLS GROUP**



**ICONIC GALAXY**  
APARTMENT



**CK HOMES PVT LTD**



**CITY EDGE RESIDENCIES**



**HOLCIM GROUP**



**CHINA STATE**  
CONSTRUCTION  
COOPERATION



**WIND FORCE PLC**



**SIAM CITY CEMENT LTD**



**CHINA HARBOUR**  
ENGINEERING  
COMPANY LTD.



**GATEWAY COLLEGE**



**GOETHE INSTITUTE**



**EFL GLOBAL**



**FOOTBALL FEDERATION**  
SRI LANKA



**MELBOURNE TEXTILE**  
PVT LTD



**OVERSEAS REALTY PLC.**



**WORLD TRADE CENTER**



**SRI LANKA MEDICAL**  
COUNCIL



**FINLAYS PLC**



**THE BLUE WATER HOTEL**



**WATER GARDEN**  
SIGIRIYA HOTEL



**THE GRAND MOUNTAIN**  
HOTEL



**NĀGĀNAND INSTITUTE**  
FOR BUDDHIST STUDIES  
(NIIBS)



**CANVAS INTERIOR**



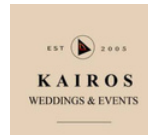
**YOKOHAMA TWS**



**TRI ZEN APARTMENT**



**WEIR HOUSE - SRI LANKA**



**KAIROS WEDDINGS**



**GLENROSS LIVING**



**SENEHASA EDUCATION**  
RESOURCE RESEARCH  
AND INFORMATION  
CENTRE



**SWASTHA BY LINK**  
NATURAL



**NSBM GREEN**  
UNIVERSITY



**RANBATH ORGANIC**





Every landscape tells a story, and within its design lies the essence of our connection to nature and to each other. Let this portfolio be the prologue to many more chapters of innovative and sustainable design, where our landscapes continue to inspire, nurture, and thrive.

**Chamara Wijesinghe**  
**chamara@biophilia.lk**  
**www.biophilia.lk**  
**+94 77 868 4055**

